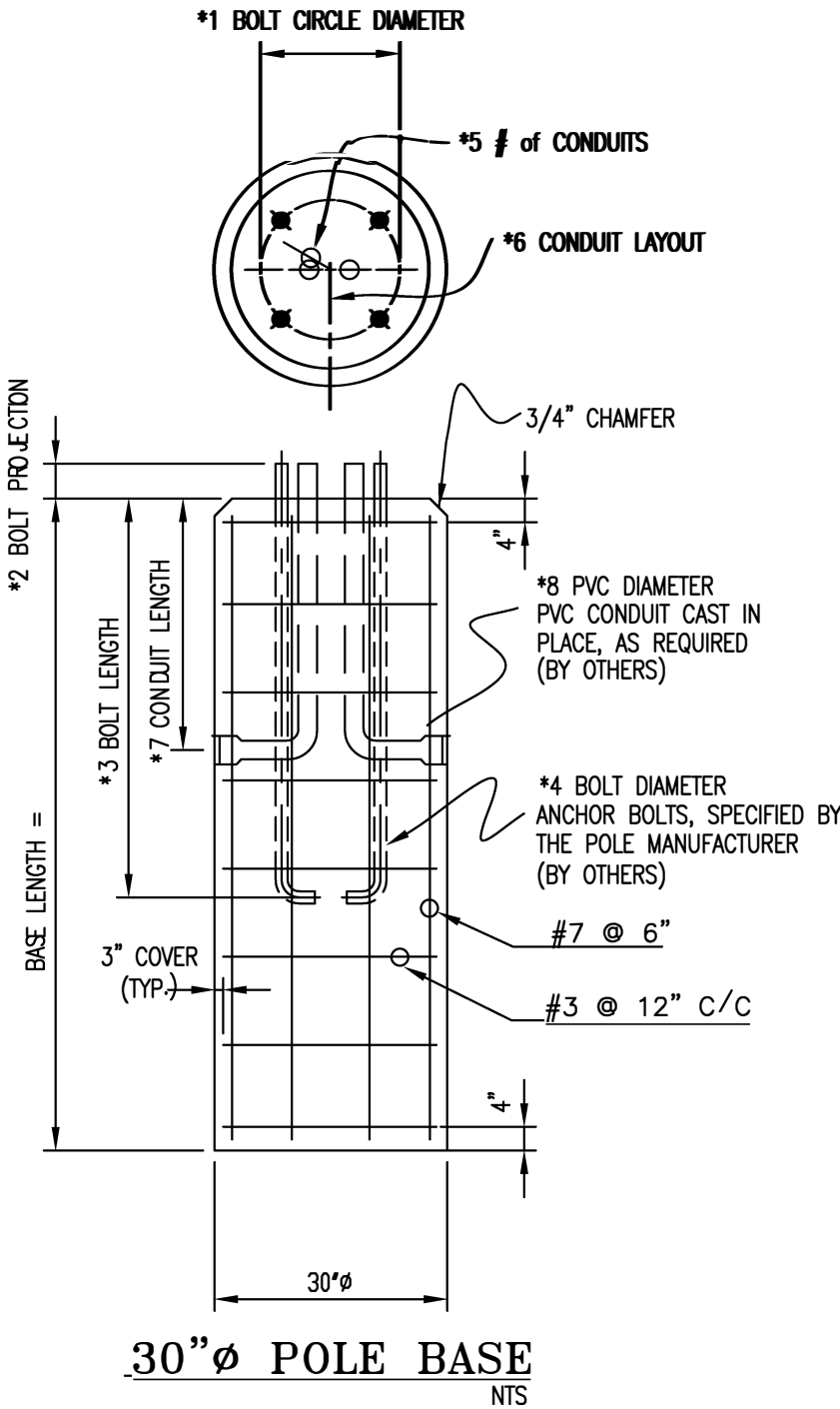
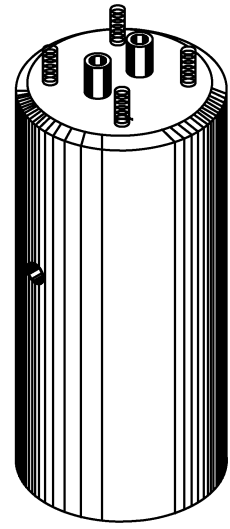


PRODUCT SPECIFICATIONS:

CONCRETE = 5,000 PSI @ 28 DAYS  
 REINFORCING = AS SPECIFIED BY THE ENGINEER  
 WEIGHT/LINEAR FT. = 707 LBS.

Signature: \_\_\_\_\_  
 Date: \_\_\_\_\_



**POLE BASE DETAILS**

*1 Bolt Circle Diam.=	_____	inches
*2 Bolt Projection=	_____	inches
*3 Bolt Length=	_____	inches
*4 Bolt Diameter=	_____	inches
*5 # of Conduits=	_____	
*6 Conduits Layout=	*Sketch conduit orientation in plan view*	
*7 Conduit Length=	_____	inches
*8 PVC Diameter=	_____	inches

\* Information MUST be provided prior to fabrication of bases

- NOTES:
- 1.0 THIS POLE BASE IS DESIGNED TO SUPPORT METAL LIGHT POLES. IT IS THE ENGINEERS RESPONSIBILITY TO DETERMINE WHICH LIGHT POLES CAN BE SUPPORTED BY THIS POLE BASE.
  - 2.0 THE ENGINEER WILL DESIGN THE SIZE OF THE BOLTS, BOLT CIRCLE DIAMETER, AND THE BOLT PROJECTION. \*\* CUSTOMER IS RESPONSIBLE FOR ACCURACY AND QUANTITY OF SUPPLIED MATERIALS \*\* INITIAL: \_\_\_\_\_
  - 3.0 CONDUIT FOR WIRING AND GROUNDING CAN BE CAST IN THE POLE BASE AS REQUIRED.